

Features

- Compact, 3-ported valves have oversized orifice for quick exhaust of cylinders, brakes, actuators, clutches, etc.
- Allow use of smaller pipe lines and control components.
- When used as a shuttle valve, high pressure from the two inlets exits through the common outlet.
- Mountable in any position.



Construction

Valve Parts in Contact with Fluids	
V04351	
Body and Bonnet	316 Stainless Steel
Seat	HYT
All Others	
Body and Bonnet	Die-Cast Zinc
Seat	NBR

Nominal Ambient Temperature Ranges:

V04351: -40°F to 125°F (-40°C to 52°C)

All Others: -4°F to 125°F (-20°C to 52°C)

Refer to Engineering Section for details.

Specifications (English units)

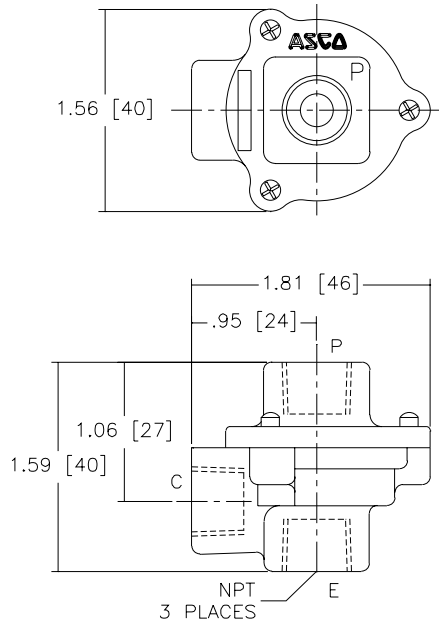
Pipe Size (ins.)	Cv Flow Factor		Opening Pressure (psi)	Maximum Operating Pressure Differential (psi)	Maximum Air Temp. °F	Quick Exhaust/ Shuttle Valve	Shutoff Valve	Body Material	Constr. Ref. No.
	Pressure to Cylinder	Cylinder to Exhaust				Catalog Number	Catalog Number		
1/8	.7	.8	5	125	125	V0435	-	Zinc	1
1/4	.8	1.0	5	125	125	V0436	-	Zinc	1
1/4	.8	1.4	15	150	125	V04351	-	S.S.	3
1/4	2.0	2.0	5	125	125	V0431	V04311	Zinc	2
3/8	3.5	4.5	5	125	125	V0432	V04321	Zinc	2

Specifications (Metric units)

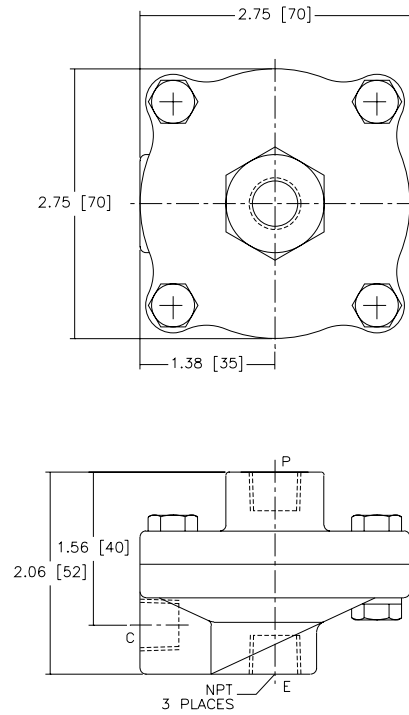
Pipe Size (ins.)	Kv Flow Factor (m3/h)		Opening Pressure (bar)	Maximum Operating Pressure Differential (bar)	Maximum Air Temp. °C	Quick Exhaust/ Shuttle Valve	Shutoff Valve	Body Material	Constr. Ref. No.
	Pressure to Cylinder	Cylinder to Exhaust				Catalog Number	Catalog Number		
1/8	.60	.69	0.3	8.6	52	V0435	-	Zinc	1
1/4	.69	.86	0.3	8.6	52	V0436	-	Zinc	1
1/4	.69	1.20	1.0	10.3	52	V04351	-	S.S.	3
1/4	1.71	1.71	0.3	8.6	52	V0431	V04311	Zinc	2
3/8	3.00	3.86	0.3	8.6	52	V0432	V04321	Zinc	2

Dimensions: inches (mm)

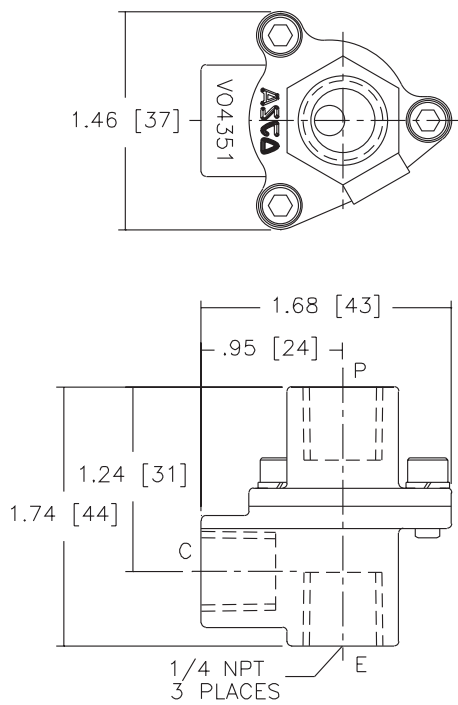
Constr. Ref. 1



Constr. Ref. 2



Constr. Ref. 3



FLOW DIAGRAMS

